

ALEXANDRIA CITY HOUSING REPORT

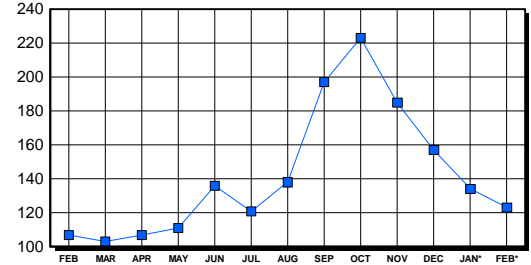
Residential Market Report Single Family Homes February 2003

LISTINGS

Price Range	New This Month			Total Active		
	2003	2002	% Change	2003	2002	% Change
0-149999	2	0	0.0	5	6	100.0
150000-299999	25	31	-19.4	29	22	31.8
300000-449999	40	43	-7.0	32	25	28.0
450000-599999	22	13	69.2	13	18	-27.8
600000-749999	15	13	15.4	18	8	125.0
750000-999999	6	3	100.0	13	17	-23.5
1000000 & Over	6	5	20.0	13	11	18.2
Grand Total:	116	108	7.4	123	107	15.0

INVENTORY TREND

Listings Active At End Of Month

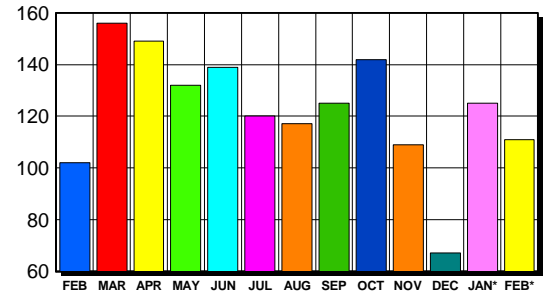


CONTRACTS

Price Range	New This Month			Year-To-Date		
	2003	2002	% Change	2003	2002	% Change
0-149999	1	0	100.0	1	2	-50.0
150000-299999	25	34	-26.5	55	74	-25.7
300000-449999	44	43	2.3	98	75	30.7
450000-599999	21	14	50.0	40	29	37.9
600000-749999	12	6	100.0	22	9	144.4
750000-999999	5	4	25.0	11	6	83.3
1000000 & Over	3	3	0.0	9	4	125.0
Grand Total:	111	104	6.7	236	199	18.6

SALES TREND

Contracts Ratified Per Month



SETTLEMENTS

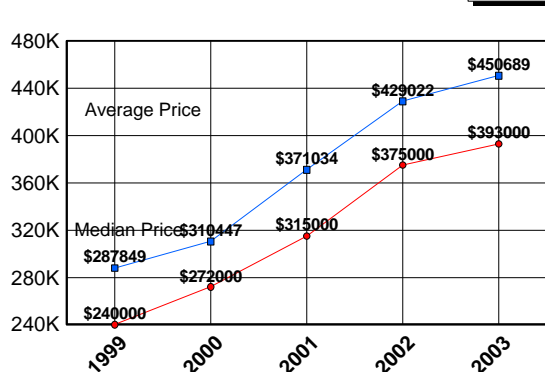
Price Range	New This Month			Year-To-Date		
	2003	2002	% Change	2003	2002	% Change
0-149999	0	2	-200.0	0	5	0.0
150000-299999	20	26	-23.1	37	56	-33.9
300000-449999	45	27	66.7	85	68	25.0
450000-599999	15	10	50.0	38	18	111.1
600000-749999	5	4	25.0	10	10	0.0
750000-999999	4	2	100.0	12	4	200.0
1000000 & Over	1	0	100.0	5	3	66.7
Grand Total:	90	71	26.8	187	164	14.0

DATA SOURCE

Metropolitan Regional Information System (MRIS)

NOTES: Properties not listed through this Multiple Listing Service are not reflected. The term "sales" represents ratified purchase contracts. Current year information is preliminary and subject to revision. Current year- to- date contract information may not equal the sum of the monthly contract totals reported in previous issues. Prices are not adjusted for inflation.

AVERAGE & MEDIAN PRICE



MARKET BY PRICE RANGE

